

TECHNICAL MANUAL

ORGANIZATIONAL, DIRECT SUPPORT,
AND GENERAL SUPPORT MAINTENANCE
REPAIR PARTS AND SPECIAL TOOLS LISTS
(INCLUDING DEPOT MAINTENANCE REPAIR PARTS AND SPECIAL TOOLS)
FOR
FREQUENCY STANDARDS
TS-65C/FMQ-1 AND TS-65D/FMQ-1
(NSN 6625-00-649-4279)

This publication is a courtesy quick copy
from the UNITED STATES ARMY
PUBLICATIONS CENTER, ST. LOUIS, MISSOURI,
to meet your needs while we are replenish-
ing our regular stock.

HEADQUARTERS, DEPARTMENT OF THE ARMY

SEPTEMBER 1978

**ORGANIZATIONAL, DIRECT SUPPORT, AND GENERAL SUPPORT MAINTENANCE
 REPAIR PARTS AND SPECIAL TOOLS LISTS
 (INCLUDING DEPOT MAINTENANCE REPAIR PARTS AND SPECIAL TOOLS)
 FOR
 FREQUENCY STANDARDS
 TS-65C/FMQ-1 AND TS-65D/FMQ-1
 (NSN 6625-00-649-4279)
 Current as of 24 April 1978**

REPORTING OF ERRORS

You can improve this manual by recommending improvements using DA Form 2028-2 located in the back of the manual. Simply tear out the self-addressed form, fill it out as shown on the sample, fold it where shown, and drop it in the mail.

If there are no blank DA Form 2028-2 in the back of your manual, use the standard DA Form 2028 (Recommended Changes to Publications and Blank Forms) and forward to the Commander, US Army Communications and Electronics Materiel Readiness Command, ATTN: DRSEL-MA-Q, Fort Monmouth, New Jersey 07703.

In either case a reply will be furnished direct to you.

Table of Contents

		Page	Illus Figure
SECTION	I. Introduction	1	
	II. Repair parts list	5	
Group	00 Frequency Standards TS-65C/FMQ-1	5	1-5
	01 Cable Assembly CX-268/FMQ-1	23	6
SECTION III.	Special Tools list (Not applicable)		
	IV. National stock number and part number index	24	

* This manual supersedes TM 11-6625-407-24P, 17 September 1973.

SECTION I INTRODUCTION

1. Scope

This manual lists spares and repair parts; special tools; and special test, measurement, and diagnostic equipment (TMDE), and other special support equipment required for performance of organizational, direct support, and general support maintenance of the TS-65C/FMQ-1 and TS-65D/FMQ-1. It authorizes the requisitioning and issue of spares and repair parts as indicated by the source and maintenance codes.

2. General

This Repair Parts and Special Tools List is divided into the following sections:

a. Section II. Repair Parts List. A list of spares and repair parts authorized for use in the performance of maintenance. The list also includes parts which must be removed for replacement of the authorized parts. Parts lists are composed of functional groups in numeric sequence, with the parts in each group listed in figure and item number sequence.

b. Section II. Special Tools List. Not applicable.

c. Section IV. National Stock Number and Part Number Index. A list, in National item identification number (NIIN) sequence, of all National stock numbers (NSN) appearing in the listings, followed by a list, in alphameric sequence, of all part numbers appearing in the listings. National stock numbers and part numbers are cross-referenced to each illustration figure and item number appearance.

3. Explanation of Columns

a. Illustration. This column is divided as follows

(1) *Figure number.* Indicates the figure number of the illustration on which the item is shown.

(2) *Item number.* The number used to identify item called out in the illustration.

b. Source, Maintenance, and Recoverability (SMR) Codes.

(1) *Source code.* Source codes indicate the manner of acquiring support items for maintenance, repair, or overhaul of end items. Source codes are entered in the first and second positions of the Uniform SMR Code format as follows:

<i>Code</i>	<i>Definition</i>
PA	-Item procured and stocked for anticipated or known usage.
XD	-A support item that is not stocked. When required, item will be procured through normal supply channels.

NOTE

Cannibalization or salvage may be used as a source of supply for any items source coded above except those coded XA and aircraft support items as restricted by AR 700-42.

(2) *Maintenance code.* Maintenance codes are assigned to indicate the levels of maintenance authorized to USE and REPAIR support items. The maintenance codes are entered in the third and fourth positions of the Uniform SMR Code format as follows:

(a) The maintenance code entered in the third position will indicate the lowest maintenance level authorized to remove, replace, and use the support item. The maintenance code entered in the third position will indicate one of the following levels of maintenance:

<i>Code</i>	<i>Application/Explanation</i>
O	-Support item is removed, replaced, used at the organizational level.
F	-Support item is removed, replaced, used at the direct support level.
H	-Support item is removed, replaced, used at the general support level.
D	-Support items that are removed, replaced, used at depot, mobile depot, specialized repair activity only.

(b) The maintenance code entered in the fourth position indicates whether the item is to be repaired and identifies the lowest maintenance level with the capability to perform complete repair (i.e., all authorized maintenance functions). This position will contain one of the following maintenance codes:

<i>Code</i>	<i>Application/Explanation</i>
0	-The lowest maintenance level capable of complete repair of the support item is the organizational level.
H	-The lowest maintenance level capable of complete repair of the support item is the general support level.
D	-The lowest maintenance level capable of complete repair of the support item is the depot level.
Z	-Nonreparable. No repair is authorized.

(3) *Recoverability code.* Recoverability codes are assigned to support items to indicate the disposition action on unserviceable items. The recoverability code is entered in the fifth position of the Uniform SMR Code format as follows:

<i>Recoverability codes</i>	<i>Definition</i>
Z	-Nonreparable item. When unserviceable, condemn and dispose as the level indicated in position 3.
0	-Reparable item. When uneconomically repairable, condemn and dispose at organizational level.
H	-Reparable item. When uneconomically repairable, condemn and dispose at the general support level.
D	-Reparable item. When beyond lower level repair capability, return to depot. Condemnation and disposal not authorized below depot level.

c. *National Stock Number.* Indicates the National stock number assigned to the item and will be used for requisitioning purposes.

d. *Part Number.* Indicates the primary number used by the manufacturer (individual, company, firm, corporation, or Government activity), which controls the design and characteristics of the item by means of its engineering drawings, specifications, standards, and inspection requirements to identify an item or range of items.

NOTE

When a stock numbered item is requisitioned, the repair part received may have a different part number than the part being replaced.

e. *Federal Supply Code for Manufacturer (FSCM).* The FSCM is a 5-digit numeric code listed in SB 708-42 which is used to identify the manufacturer, distributor, or Government agency, etc.

f. *Description.* Indicates the Federal item name and, if required, a minimum description to identify the item.

g. *Unit of Measure (U/M).* Indicates the standard of the basic quantity of the listed item as used in performing the actual maintenance function. This measure is expressed by a two-character alphabetical abbreviation (e.g., ea, in, pr, etc). When the unit of measure differs from the unit of issue, the lowest unit of issue that will satisfy the required units of measure will be requisitioned.

h. *Quantity Incorporated in Unit.* Indicates the quantity of the item used in the breakout shown on the illustration figure, which is prepared for a functional group, subfunctional group, or an assembly. A "V" appearing in this column in lieu of a quantity indicates that no specific quantity is applicable, (e.g., shims, spacers, etc).

4. Special Information

a. Usable on codes are shown in the description column. Uncoded items are applicable to all models. Identification of the usable on codes used in this publication

are:

Code	Used on
2HZ	TS-65C/FMQ-1
21R	TS-65D/FMQ-1

b. The following publication pertains to the TS-65C/FMQ-1 and TS-65D/FMQ-1 and its components

TM 11-6625-407-14, Frequency Standard TS-65C/FMQ-1 and TS-65D/FMQ-1

5. How to Locate Repair Parts

a. When National stock number or part number is unknown.

(1) *First.* Using the table of contents, determine the functional group within which the item belongs. This is necessary since illustrations are prepared for functional groups and listings are divided into the same groups.

(2) *Second.* Find the illustration covering the functional group to which the item belongs.

(3) *Third.* Identify the item on the illustration and note the illustration figure and item number of the item.

(4) *Fourth.* Using the Repair Parts Listing, find the figure and item number noted on the illustration.

b. When National stock number or part number is known.

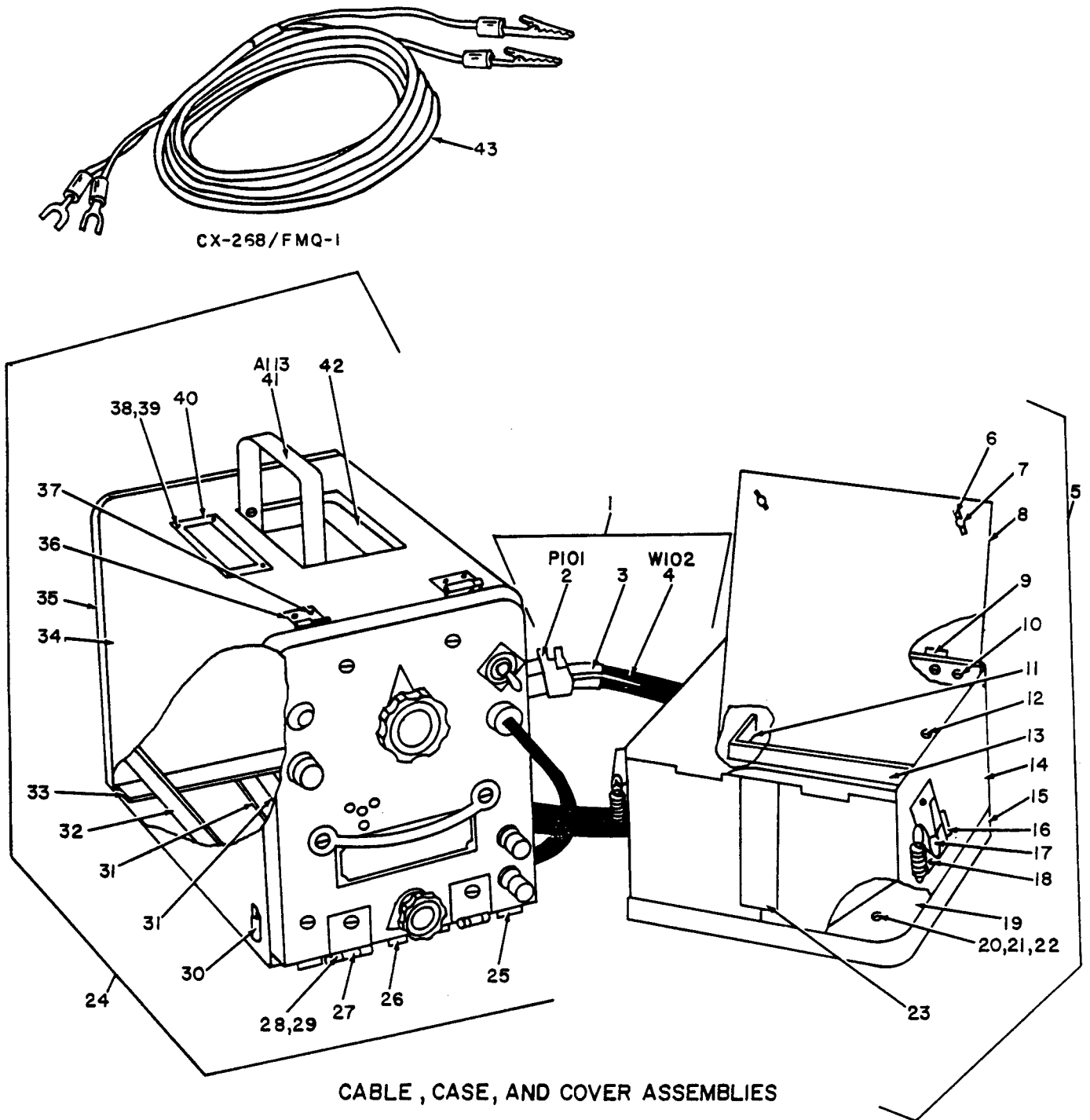
(1) *First.* Using the Index of National Stock Numbers and Part Numbers, find the pertinent National stock number or part number. This index is in NIIN sequence followed by a list of part numbers in alphameric sequence, cross-referenced to the illustration figure number and item number.

(2) *Second.* After finding the figure and item number, locate the figure and item number in the repair parts list.

6. Abbreviations

Not applicable.

(Next printed page is 4)



CABLE , CASE, AND COVER ASSEMBLIES

EL4ZJ001

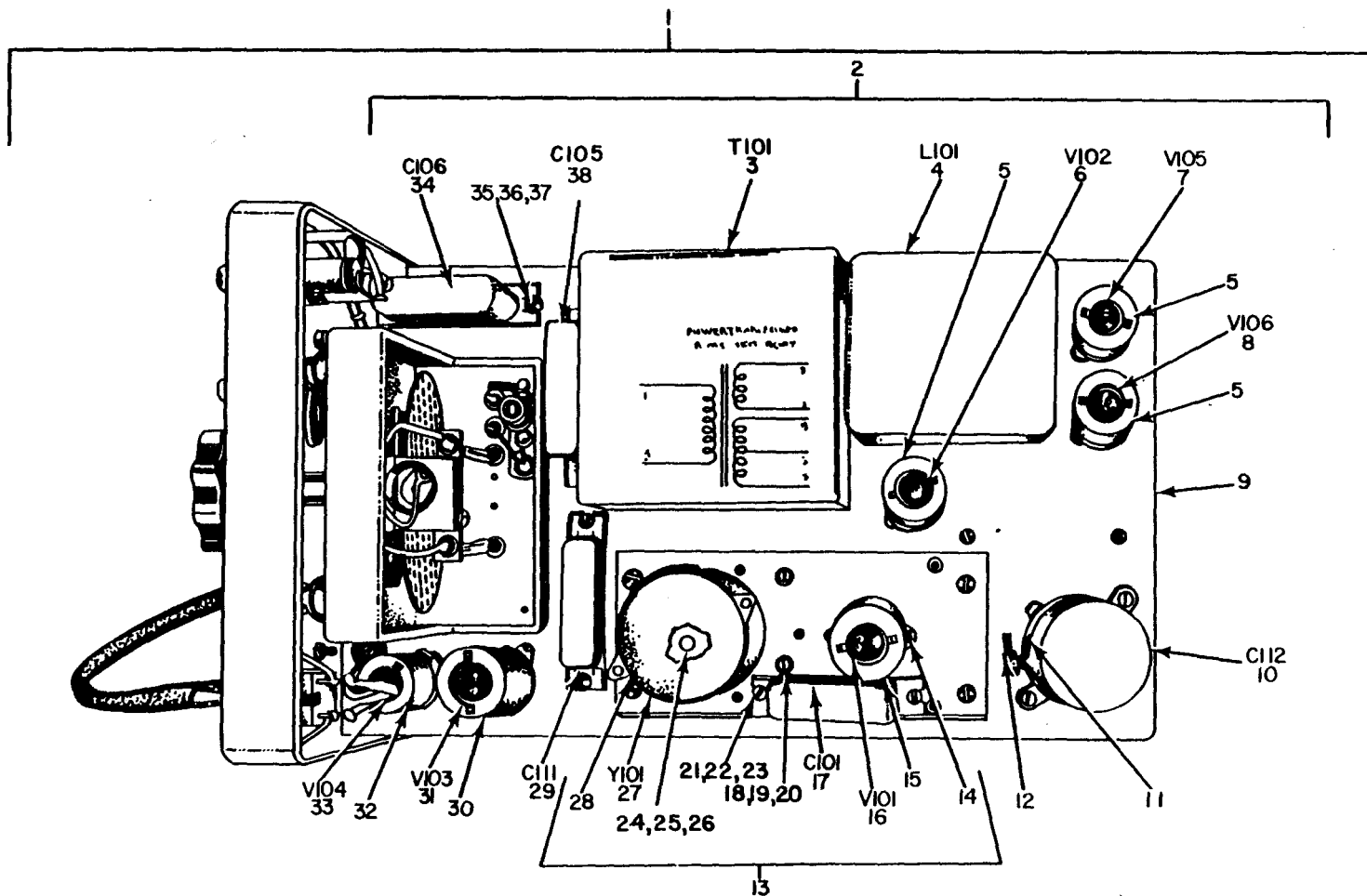
Figure 1. Frequency Standards TS-65C/FMQ-1 and TS-65D/FMQ-1.

TM11-6625-407-1 SECTION II

(1) ILLUSTRATION (A) FIG NO.	(2) (B) ITEM NO.	(3) SMR CODE	(4) NATIONAL STOCK NUMBER	(5) PART NUMBER	(6) FSCM	DESCRIPTION	(7) USABLE ON CODEU/M	(8) QTY INC IN UNIT
GROUP 00 FREQUENCY STANDARDS TS-65C/FMQ-1								
AND TS-65D/FMQ-1								
1	1	XDOOO		SCB74835	80063	CABLE ASSEMBLY	EA	1
1	2	PAOZZ	5935-00-636-7145	UP121M	81349	CONNECTOR, PLUG, ELEC	EA	1
1	3	XDOZZ		SCB34065	80063	BAND	EA	2
1	4	PAOZZ	6145-00-500-1726	SCB748352	80063	CABLE, POWER, ELEC	FT	9
1	5	XDDDD		SCD74822	80063	COVER ASSEMBLY	2HZ EA	1
1	5	XDDDD		SMD353963	80063	COVER ASSEMBLY	2IR EA	1
1	6	XDDZZ		SCD748223	80063	PIN, CROSS	EA	2
1	7	XDDZZ		SCD74822-2	80063	STUD, TURNBUTTON	EA	2
1	8	XDDZZ		SCD74826	80063	LID	EA	1
1	9	XDDZZ		SCD748224	80063	HINGEK, FEMALE HALF	EA	2
1	10	PAOZZ	5320-00-117-6516	MS20470AD4-3	96906	RIVET	EA	10
1	11	XDDZZ		SCB74824	80063	ANGLE	EA	1
1	12	XDDZZ		SCD74815-1	80063	STUD, TURNBUTTON	EA	2
1	13	XDDZZ		SCB74825	80063	HINGE, BUTT	EA	1
1	14	XDDZZ		SCC74823	80063	COVER	EA	1
1	15	XDDZZ		SCC74827	80063	END	EA	1
1	16	PADZZ	5325-00-290-3974	99967C098	76530	RECEPTACLE, TURNLOCK	EA	4
1	17	PADZZ	5340-00-205-5159	SCD20648	80063	CATCH, LUGGAGE	EA	2
1	18	XDDZZ		1032A34	88044	RIVET	EA	4
1	19	XDDZZ		SCB74828	80063	GUSSET	EA	2
1	20	XDDZZ		MS35190-10	96906	SCREW	EA	
1	21	PADZZ	5310-00-579-5554	MS35333-35	96906	WASHER, LOCK	EA	
1	22	PADZZ	5310-00-934-9738	MS35649-222	96906	NUT, HEXAGON	EA	4
1	23	XDDZZ		SCB748294	80063	PLATE	EA	1
1	24	XDDDD		SCD74815	80063	CASE ASSEMBLY	EA	1
1	25	PADZZ	5340-00-290-0134	DS189	81044	GLIDE, FURNITURE	2IR EA	4
1	26	XDDZZ		SCB748293	80063	PLATE	EA	1
1	27	XDDZZ		SCB74818	80063	HINGE, BUTT	EA	2
1	28	XDDZZ		SCD748152	80063	PIN	EA	2
1	29	XDDZZ		SCB74833	80063	RING	EA	1
1	30	PADZZ	5340-00-571-2569	SCD2065027	80063	STRIKE, CATCH	EA	2
1	31	XDDZZ		SCB748292	80063	PLATE	EA	2
1	32	XDDZZ		SCB74891	80063	ANGLE	EA	2
1	33	XDDZZ		SCB748291	80063	PLATE	EA	1
1	34	XDDZZ		SCD74816	80063	BODY	EA	1
1	35	XDDZZ		SCC74827	80063	END	EA	1
1	36	XDDZZ		SCD748153	80063	HINGE, MALE HALF	EA	2
1	37	PADZZ	5320-00-117-6516	MS20470AD4-3	96906	RIVET	EA	12

TM11-6625-407-SECTION II

(1) ILLUSTRATION (A) FIG NO.	(B) ITEM NO.	(2) SMR CODE	(3) NATIONAL STOCK NUMBER	(4) PART NUMBER	(5) FSCM	(6) DESCRIPTION	(7) USABLE ON CODE U/M	(8) QTY INC IN UNIT
1	38	XDDZZ		MS35206-2	96906	SCREW	EA	4
1	39	PADZZ	5310-00-579-5554	MS35333-35	96906	WASHER, LOCK	EA	4
1	40	XDDZZ		SCD748141	80063	NAMEPLATE	EA	1
1	41	XDDDD		SCB74819	80063	HANDLE ASSEMBLY	EA	1
1	42	XDDZZ		SCB74817	80063	PAN	EA	1
1	43	PAOOO	6625-00-234-0262	CX268FMQ1	80058	CABLE ASSEMBLY	EA	1



TOP VIEW

EL4ZJ002

Figure 2. Frequency Standards TS-65C/FMQ-1 and TS-65D/FMQ-1, Panel and Chassis
(Sheet 1 of 2).

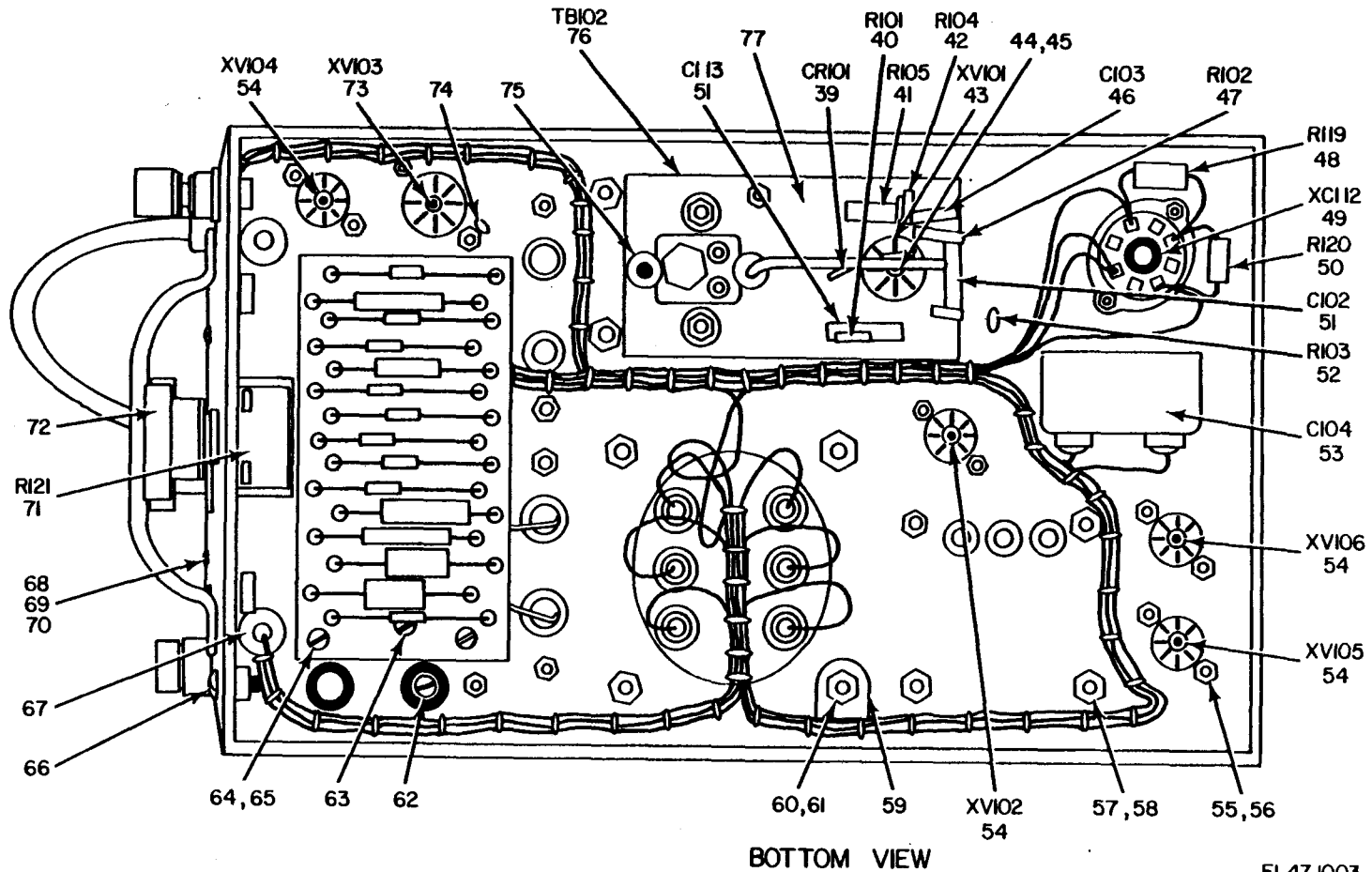
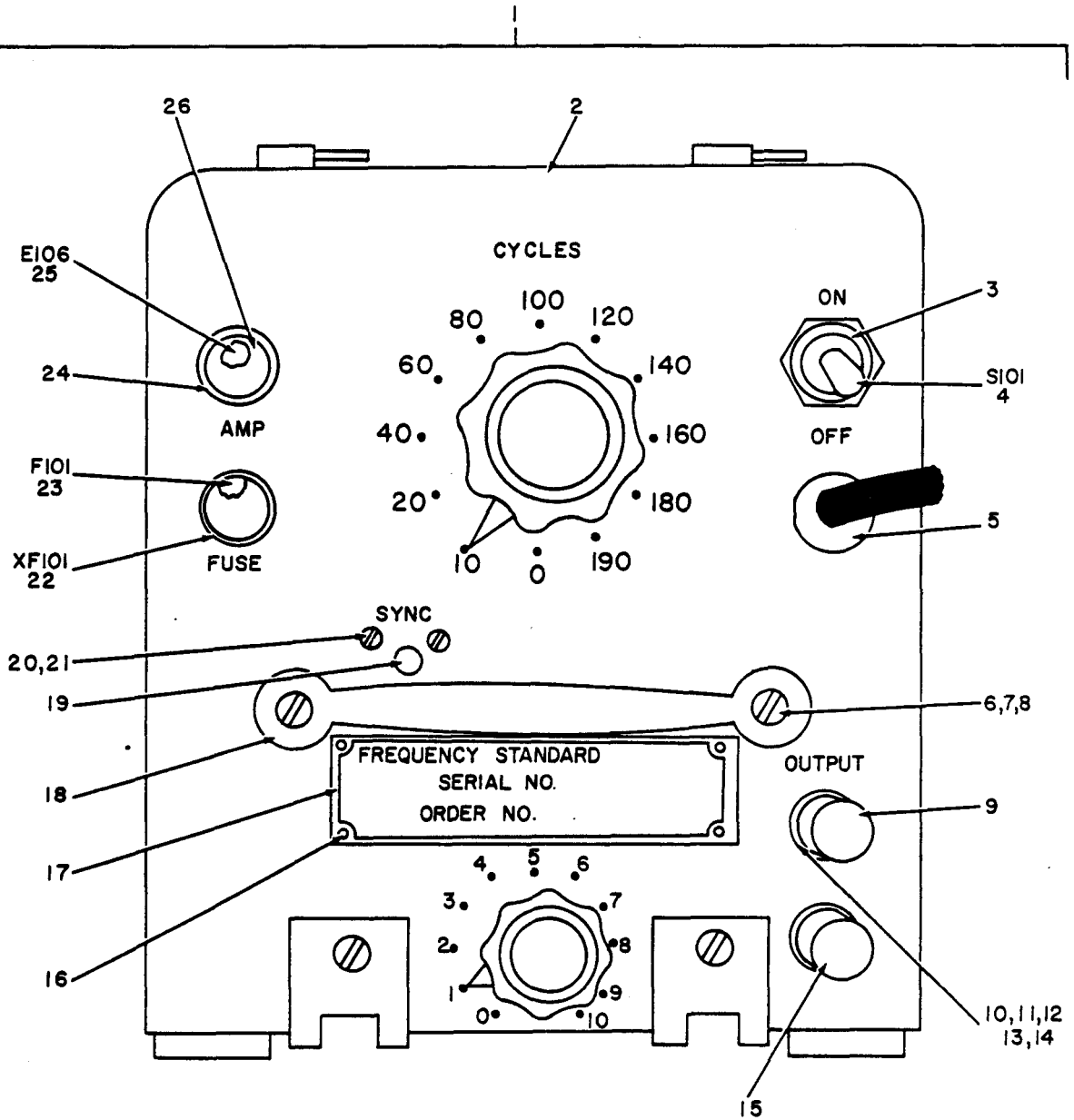


Figure 2. Frequency Standards TS-65C/FMQ-1 and TS-65D/FMQ-1, Panel and Chassis
(Sheet 2 of 2).

EL4ZJ003

(1) ILLUSTRATION (A) FIG NO.	(2) (B) ITEM NO.	(3) SMR CODE	(4) NATIONAL STOCK NUMBER	(5) PART NUMBER	(6) FSCM	DESCRIPTION	USABLE ON	(7) CODE U/M	(8) QTY INC IN UNIT
2	1	XDDDD		SCD74830	80063	PANEL AND CHASSIS	2HZ	EA	1
2	1	XDDDD		SMD353965	80063	PANEL AND CHASSIS	2IR	EA	1
2	2	XDDDD		SCD74836	80063	CHASSIS ASSEMBLY	2HZ	EA	1
2	2	XDDDD		SMD353971	80063	CHASSIS ASSEMBLY	2IR	EA	1
2	3	PAFZZ	5950-00-268-8700	SCC74842	80063	TRANSFORMER, SDN& SU		EA	1
2	4	XDFZZ		SCC74843	80063	REACTOR		EA	1
2	5	PAOZZ	5960-00-866-2712	TS103U01	81349	SHIELD, ELCTR N TUBE		EA	3
2	6	PAOZZ	5960-00-669-6861	6005-6AQ5W	81349	ELECTRON TUBE		EA	1
2	7	PAOZZ	5960-00-272-9182	6X4WA	81349	ELECTRON TUBE	2IR	EA	1
2	8	PAOZZ	5960-00-624-4718	0B2WA	81349	ELECTRON TUBE		EA	1
2	9	XDDZZ		SCB74839	80063	CHASSIS		EA	1
2	10	PAFZZ	5910-00-725-7247	CE53C350P	81349	CAPACITOR, ELCTLC		EA	1
2	11	XDFZZ		12125	14655	RETAINER, CAPACITOR		EA	1
2	12	PAFZZ	5310-00-934-9739	MS35649-242	96906	NUT		EA	4
2	13	XDFDD		SCC74838	80063	TUNING FORK ASSY	2HZ	EA	1
2	13	XDFDD		SMC353969	80063	TUNING FORK ASSY	2IR	EA	1
2	14	XDFZZ		SCB748823	80063	SPACER		EA	2
2	15	PAOZZ	5960-00-686-8087	MS24233-5	96906	SHIELD, ELECTRN TUBE		EA	1
2	16	PAOZZ	5960-00-262-0167	12AT7WA	81349	ELECTRON TUBE	2IR	EA	1
2	17	PAFZZ	5910-00-161-6862	CP69B1EF504K1	81349	CAPACITOR, FXD, PAPER		EA	1
2	18	PAFZZ	5305-00-059-8228	MS35214-3	96906	SCREW		EA	2
2	19	PAFZZ	5310-00-809-8544	MS27183-7	96906	WASHER		EA	2
2	20	XDFZZ		SMB170320	80063	POST		EA	2
2	21	XDFZZ		MS35206-27	96906	SCREW		EA	2
2	22	PAFZZ	5310-00-579-0079	MS35333-37	96906	WASHER, LOCK		EA	2
2	23	PAFZZ	5310-00-934-9747	MS35649-262	96906	NUT, HEXAGON		EA	2
2	24	XDOZZ		SCD748364	80063	LUG		EA	1
2	25	PAFZZ	5310-00-559-0070	MS35333-38	96906	WASHER, LOCK		EA	6
2	26	PAFZZ	5310-00-934-9757	MS35649-282	96906	NUT, HEXAGON		EA	9
2	27	PAFDD	6625-00-338-4421	54360	03040	TUNING FORK		EA	1
2	28	XDFZZ		SMB170326	80063	SUPPORT		EA	1
2	29	PAFZZ	5910-00-112-8334	CP6981EF104V	81349	CAPACITOR, FXD, PAPER		EA	1
2	30	PAOZZ	5960-00-686-8087	MS24233-5	96906	SHIELD, ELECTRN TUBE		EA	1
2	31	PAOZZ	5960-00-827-8782	12AX7WA	81349	ELECTRON TUBE		EA	1
2	32	PAOZZ	5960-00-686-8085	MS24233-2	96906	SHIELD, ELCTR N TUBE		EA	1
2	33	PAOZZ	5960-00-284-9285	5727-2D21W	81349	ELECTRON TUBE	2IR	EA	1
2	34	PAFZZ	5910-00-161-6862	CP69B1EF504K1	81349	CAPACITOR, FXD, PAPER		EA	1
2	35	XDFZZ		MS35206-27	96906	SCREW		EA	11
2	36	PAFZZ	5310-00-579-0079	MS35333-37	96906	WASHER, LOCK		EA	17
2	37	PAFZZ	5310-00-934-9747	MS35649-262	96906	NUT, HEXAGON		EA	11

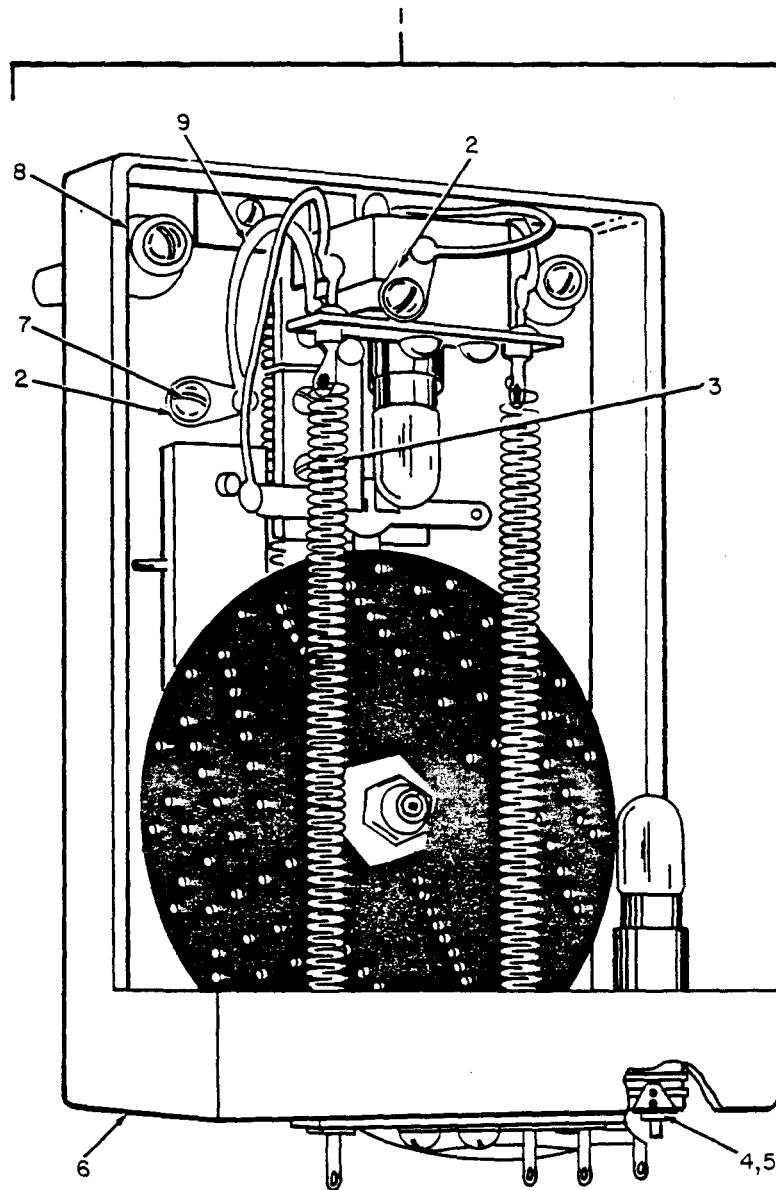
(1) ILLUSTRATION (A) FIG NO.	(B) ITEM NO.	(2) SMR CODE	(3) NATIONAL STOCK NUMBER	(4) PART NUMBER	(5) FSCM	(6) DESCRIPTION	(7) USABLE ON CODE U/M	(8) QTY INC IN UNIT
2	38	PAFZZ	5910-00-161-6561	CP69B1EF105V	81350	CAPCITOR, FXD, PAPER	EA	1
2	39	PAFZZ	5920-00-248-8871	432BNR1	10646	ARRESTOR, ELEC SURGE	EA	1
2	40	PAFZZ	5905-00-141-0592	RC20GF122J	81349	RESISTOR, FXD, CMPSN	EA	1
2	41	PAFZZ	5905-00-299-2028	RC32GF153J	81349	RESISTOR, FXD, CMPSN	EA	1
2	42	PAFZZ	5905-00-279-3504	RC20GF472J	81349	RESISTOR, FXD, CMPSN	EA	1
2	43	PAFZZ	5935-00-222-9828	TS103P01	81349	SOCKET, ELCTRN TUBE	EA	1
2	44	PAFZZ	5310-00-193-7577	MS35333-36	96906	WASHER	EA	2
2	45	XDFZZ		SMB170322	80063	GROMMET	EA	1
2	46	PAFZZ	5910-00-186-0113	65P22392	56289	CAPACITOR, FXD, PAPER	EA	1
2	47	PAFZZ	5905-00-192-0390	RC20GF105J	81349	RESISTOR, FXD, CMPSN	EA	1
2	48	PAFZZ	5905-00-185-8516	RC42GF103J	81349	RESISTOR, FXD, CMPSN	EA	1
2	49	PAFZZ	5935-00-201-4783	TS101P01	81350	SOCKET, ELCTRN TUBE	EA	1
2	50	PAFZZ	5905-00-106-9346	RC32GF103K	81349	RESISTOR, FXD, CMPSN	EA	1
2	51	PAFZZ	5910-00-649-0455	65P10303	56289	CAPACITOR, FXDK, PAPER	EA	2
2	52	PAFZZ	5905-00-195-6761	RC20GF104J	81349	RESISTOR, FXD, CMPSN	EA	1
2	53	PAFZZ	5910-00-543-9267	CE63C500G	81349	CAPACITOR, ELCTLC	EA	1
2	54	PAFZZ	5935-00-260-0516	TS102P01	81349	SOCKET, ELCTRN TUBE	EA	4
2	55	PAFZZ	5305-00-889-2997	MS35206-215	96906	SCREW	EA	2
2	56	PAFZZ	5310-00-193-7577	MS35333-36	96906	WASHER	EA	2
2	57	PAFZZ	5305-00-616-8543	MS35265-3	96906	SCREW	EA	2
2	58	PAFZZ	5310-00-559-0070	MS35333-38	96906	WASHER, LOCK	EA	9
2	59	XDFZZ		SCD748365	80063	CLAMP	EA	1
2	60	PAFZZ	5310-00-576-5752	MS35333-39	96906	WASHER	EA	4
2	61	PAFZZ	5310-00-934-9758	MS35649-202	96906	NUT	EA	4
2	62	PAFZZ	5305-00-984-4989	MS35206-26	96906	SCREW	EA	2
2	63	PAFZZ	5305-00-889-3116	MS35206-213	96906	SCREW	EA	2
2	64	PAFZZ	5305-00-889-3001	MS35206-28	96906	SCREW	EA	2
2	65	XDFZZ		SCB748832	80063	POST	EA	4
2	66	PAFZZ	5305-00-984-6195	MS35206-44	96906	SCREW	EA	2
2	67	PAFZZ	5325-00-270-8870	6	77969	GROMMET, RUBBER	EA	2
2	68	XDFZZ		SCB748831	80063	POST	EA	2
2	69	XDFZZ		SCB748822	80063	SPACER	EA	2
2	70	PAFZZ	5310-00-983-8483	MS27183-5	96906	WASHER	EA	6
2	71	PAFZZ	5905-00-643-6284	RV4NAYS503A	81349	RESISTOR, VARIABLE	EA	1
2	72	PAOZZ	5355-00-284-5659	1166	11242	KNOB	EA	1
2	73	PAFZZ	5935-00-222-9828	TS103P01	81349	SOCKET, ELCTRN TUBE	EA	1
2	74	XDOZZ		SCC748383	80063	TERMINAL, LUG	EA	1
2	75	PAFZZ	5325-00-185-0017	AN931A3-5	88044	GROMMET, RUBBER	EA	4
2	76	PAFZZ	5940-00-155-7287	2005	71785	TERMINAL BOARD	EA	1
2	77	XDFZZ	5940-00-143-5330	756	81312	INSULATOR	EA	2



EL4ZJ004

Figure 3. Frequency Standards TS-65C/FMQ-1 and TS-65D/FMQ-1, Panel Assembly.

(1) ILLUSTRATION (A) FIG NO.	(B) ITEM NO.	(2) SMR CODE	(3) NATIONAL STOCK NUMBER	(4) PART NUMBER	(5) FSCM	(6) DESCRIPTION	USABLE ON	(7) CODE U/M	(8) QTY INC IN UNIT
3	1	XDDDD		SCD74831	80063	PANEL ASSEMBLY	2HZ	EA	1
3	1	XDDDD		SMD353966	80063	PANEL ASSEMBLY	2IR	EA	1
3	2	XDFZZ		SCC74832	80063	PANEL	2HZ	EA	1
3	2	XDFZZ		SMC353967	80063	PANEL	2IR	EA	1
3	3	PAFZZ	5930-00-539-7013	MILB-005423-TYPE A, STYLE NO.-3	81349	DUST AND MSTRE SEAL		EA	1
3	4	PAFZZ	5930-00-655-1507	MS25100-22	96906	SWITCH, TOGGLE		EA	1
3	5	PAOZZ	5975-00-273-0788	SR6P	28520	BUSHING, CABLE		EA	1
3	6	XDFZZ		MS35190-33	96906	SCREW		EA	2
3	7	PAFZZ	5310-00-579-0079	MS35333-37	96906	WASHER, LOCK		EA	4
3	8	PAFZZ	5310-00-934-9747	MS35649-262	96906	NUT, HEXAGON		EA	2
3	9	PAFZZ	5940-00-194-7706	SCB74844	80063	POST, BINDING, RED		EA	1
3	10	XDFZZ		SCB74845	80063	INSULATOR, BUSHING		EA	1
3	11	XDOZZ	5940-00-271-7258	7	79963	LUG		EA	1
3	12	PAFZZ	5310-00-934-9757	MS35649-282	96906	NUT, HEXAGON		EA	1
3	13	PAFZZ	5310-00-559-0070	MS35333-38	96906	WASHER, LOCK		EA	1
3	14	XDFZZ		SCD748312	80063	WASHER, NONMETALLIC		EA	1
3	15	PAFZZ	5940-00-221-0100	7775	72825	POST, BINDING, BLACK		EA	1
3	16	XDFZZ		TYPEU	45722	SCREW		EA	4
3	17	XDFZZ		SCD748313	80063	NAMEPLATE	2HZ	EA	1
3	17	XDFZZ		SMB353970	80063	NAMEPLATE	2IR	EA	1
3	18	XDFZZ		200	82851	HANDLE		EA	1
3	19	XDFZZ		SCB74834	80063	WINDOW		EA	1
3	20	XDFZZ		MS35206-3	96906	SCREW		EA	3
3	21	PAFZZ	5310-00-058-2950	MS35337-77	96906	WASHER		EA	3
3	22	PAFZZ	5920-00-892-9311	342001	75195	FUSEHOLDER		EA	1
3	23	PAOZZ	5920-00-280-8344	F02GR500A	81349	FUSE, CARTRIDGE	2HZ	EA	1
3	23	PAOZZ	5920-00-280-8342	F02G1R00A	81349	FUSE, CARTRIDGE	2IR	EA	1
3	24	PAFZZ	6210-00-186-7923	810B431	72619	LAMPHOLDER ASSY		EA	1
3	25	PAOZZ	6240-00-057-2887	44	08806	LAMP, INCANDESCENT		EA	1
3	26	PAOZZ	6210-00-299-3916	81-431	72619	LENS IND LIGHT, RED		EA	1



SUBASSEMBLY, COVER REMOVED

EL4ZJ005

Figure 4. Frequency Standards TS-65C/FMQ-1 and TS-65D/FMQ-1, PhotoElectric Cell Assembly (Sheet 1 of 2).

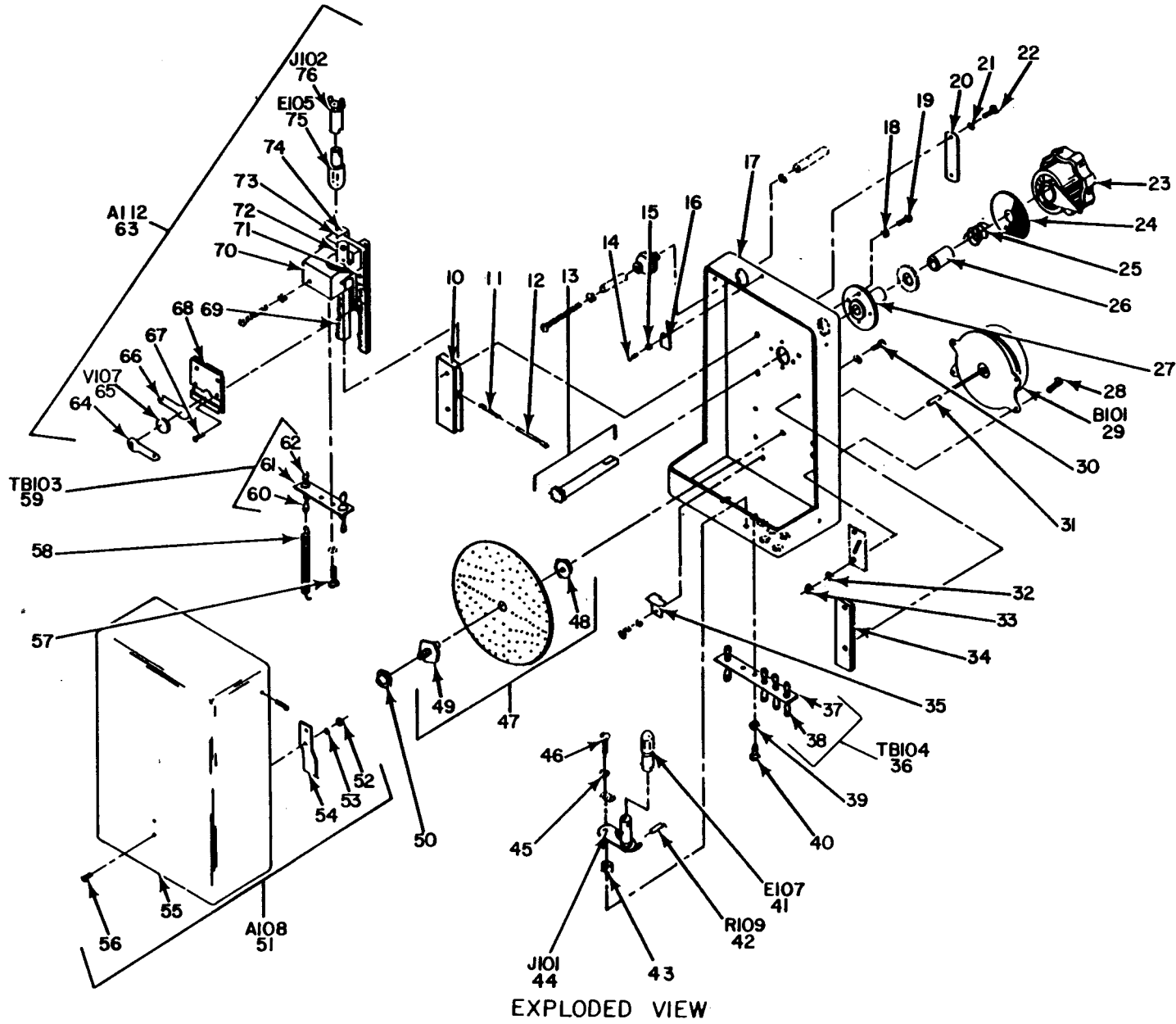


Figure 4. Frequency Standards TS-65C/FMQ-1 and TS-65D/FMQ-1, PhotoElectric Cell Assembly (Sheet 2 of 2).

EL4ZJ006

(1) ILLUSTRATION (A) FIG NO.	(B) ITEM NO.	(2) SMR CODE	(3) NATIONAL STOCK NUMBER	(4) PART NUMBER	(5) FSCM	(6) DESCRIPTION	(7) USABLE ON CODE U/M	(8) QTY INC IN UNIT
4	1	XDHHD		SCD74848	80063	PELEC CELL ASSY	EA	1
4	2	XDHZZ	5940-00-156-7344	2104-06-00	78189	TERMINAL	EA	2
4	3	XDHZZ		SCB74868	80063	SPRING	EA	2
4	4	XDHZZ		MS35206-32	96906	SCREW	EA	1
4	5	XDHZZ		SCB748824	80063	SPACER	EA	2
4	6	XDHZZ		SCB74871	80063	BRACKET	EA	1
4	7	PAHZZ	5305-00-984-4988	MS35206-25	96906	SCREW	EA	1
4	8	XDHZZ		W72879	77748	MOUNT, RESILIENT	EA	2
4	9	XDHZZ		SCD748488	80063	BRAID, WIRE, COPPER	IN	V
4	10	XDHZZ		SCB74852	80063	SLIDE	EA	1
4	11	PAHZZ	5360-00-268-1980	SCB74853	80063	SPRING, HLCPS	EA	1
4	12	XDHZZ		SCB74854	80063	DETENT	EA	1
4	13	PAHZZ	6625-00-309-3505	SCB74861	80063	SHAFT ASSEMBLY	EA	1
4	14	XDHZZ		MS35206-2	96906	SCREW	EA	8
4	15	PAHZZ	5310-00-579-5554	MS35333-35	96906	WASHER, LOCK	EA	8
4	16	XDHZZ		SCB74851	80063	PLATE, STOP	EA	1
4	17	XDHZZ		SCC74849	80063	MOUNTING, CONT UNIT	EA	1
4	18	PAHZZ	5310-00-983-8483	MS27183-5	96906	WASHER	EA	2
4	19	XDHZZ		MS35206-33	96906	SCREW	EA	2
4	20	XDHZZ		SCB74858	80063	PLATE	EA	1
4	21	XDHZZ	5310-00-264-1337	1205-00	78189	WASHER	EA	6
4	22	XDHZZ		MS35206-205	96906	SCREW	EA	2
4	23	PAOZZ	5355-00-160-5881	S3096440269	75376	KNOB	EA	1
4	24	XDHZZ		SCB74847	80063	WASHER, NONMETALLIC	EA	1
4	25	XDHZZ		SCB74846	80063	SPRING, HLCPS	EA	1
4	26	XDHZZ		SCB748221	80063	SPACER	EA	2
4	27	XDHZZ		SCB74850	80063	BEARING, PL, SLEEVE	EA	1
4	28	XDHZZ		MS35206-14	96906	SCREW	EA	4
4	29	PAHZZ	3010-00-548-2222	SCB74860	80063	MOTOR, AC	EA	1
4	30	XDHZZ		MS35206-3	96906	SCREW	EA	3
4	31	XDHZZ		SCB74884	80063	SPACER	EA	1
4	32	PAHZZ	5310-00-193-7577	MS35333-36	96906	WASHER	EA	12
4	33	PAHZZ	5310-00-934-9739	MS3569-242	96906	NUT	EA	4
4	34	XDHZZ		SCB74855	80063	SLIDE	EA	1
4	35	XDHZZ		SCB74888	80063	STOP	EA	1
4	36	XDHZZ		SCC69098	80063	TERMINAL BOARD ASSY	EA	1
4	37	XDHZZ		SCB74856	80063	STRIP	EA	1
4	38	XDHZZ		SCC69098-1	80063	TERMINAL	EA	4
4	39	PAHZZ	5310-00-579-0079	MS35333-37	96906	WASHER, LOCK	EA	4
4	40	PAHZZ	5305-00-984-4989	MS35206-26	96906	SCREW	EA	4

(1) ILLUSTRATION (A) FIG NO.	(2) (B) ITEM NO.	(3) SMR CODE	(4) NATIONAL STOCK NUMBER	(4) PART NUMBER	(5) FSCM	(6) DESCRIPTION	(7) USABLE ON CODE U/M	(8) QTY INC IN UNIT	
4	41	PAOZZ	6240-00-223-9100	NE-51	24455	LAMP, GLOW	EA	1	
4	42	PAHZZ	5905-00-195-6761	RC20GF104J	81349	RESISTOR, FXD, CMPSN	EA	1	
4	43	XDHZZ		SCB74882-4	80063	SPACER	EA	1	
4	44	PAHZZ	6250-00-227-0329	712	13812	LAMPHOLDER	EA	1	
4	45	PAHZZ	5310-00-913-8881	MS51971-3	96906	NUT	EA	1	
4	46	PAHZZ	5305-00-889-3001	MS35206-28	96906	SCREW	EA	2	
4	47	PAHHH	6625-00-265-7862	SCC74874	80063	DISK ASSEMBLY	EA	1	
4	48	XDHZZ		SCB74877	80063	NUT	EA	1	
4	49	XDHZZ		SCB74876	80063	HUB	EA	1	
4	50	XDHZZ		SCB74878	80063	NUT, SLFLKG	EA	1	
4	51	XDHHH		SCC74879	80063	COVER ASSEMBLY	EA	1	
4	52	PAHZZ	5310-00-934-9738	MS35649-222	96906	NUT, HEXAGON	EA	2	
4	53	PAHZZ	5310-00-579-5554	MS35333-35	96906	WASHER, LOCK	EA	2	
4	54	XDHZZ		SCB74881	80063	CLIP, COVER	EA	1	
4	55	XDHZZ		SCB74880	80063	COVER	EA	1	
4	56	XDHZZ		MS35206-3	96906	SCREW	EA	2	
4	57	PAHZZ	5305-00-993-0190	MS35206-214	96906	SCREW	EA	4	
4	58	PAHZZ	5360-00-351-6062	SCB74857	80063	SPRING, HLCL, EXT	EA	2	
4	59	XDHZZ		SCB78092	80063	TERMINAL BOARD	EA	1	
4	60	XDHZZ		SCB78092-2	80063	TERMINAL	EA	2	
4	61	XDHZZ		SCB74872	80063	STRIP	EA	1	
4	62	XDHZZ	5940-00-513-3264	2101-06-00	78189	TERMINAL	EA	1	
4	63	XDHHH		SCC74863	80063	CARRIAGE ASSEMBLY	EA	1	
4	64	XDHZZ		SCB74869	80063	CONTACT, ELECTRICAL	EA	1	
4	65	PAOZZ	5961-00-284-4840	6A	73506	PHOTOELECTRIC CELL	2HZ	EA	1
4	65	PAOZZ	5961-00-608-7033	A3	81348	PHOTOELECTRIC CELL	2IR	EA	1
4	66	PAHZZ	5999-00-351-3833	SCB74870	80063	CONTACT, ELECTRICAL	EA	1	
4	67	XDHZZ		MS35206-1	96906	SCREW	EA	14	
4	68	XDHZZ		SCB74867	80063	MOUNTING, SEAT	EA	1	
4	69	XDHZZ		SCB74864	80063	RACK	EA	1	
4	70	XDHZZ		SCB74866	80063	BASE	EA	1	
4	71	XDHZZ		MS35190-33	96906	SCREW	EA	1	
4	72	XDHZZ		SCC748633	80063	PIN	EA	1	
4	73	XDHZZ		SMB170321	80063	PLATE	EA	1	
4	74	XDHZZ		SCB74865	80063	GEAR RACK	EA	1	
4	75	PAOZZ	6240-00-057-2887	44	08806	LAMP, INCANDESCENT	EA	1	
4	76	PAHZZ	6250-00-242-8704	217H	72765	LAMPHOLDER	EA	1	

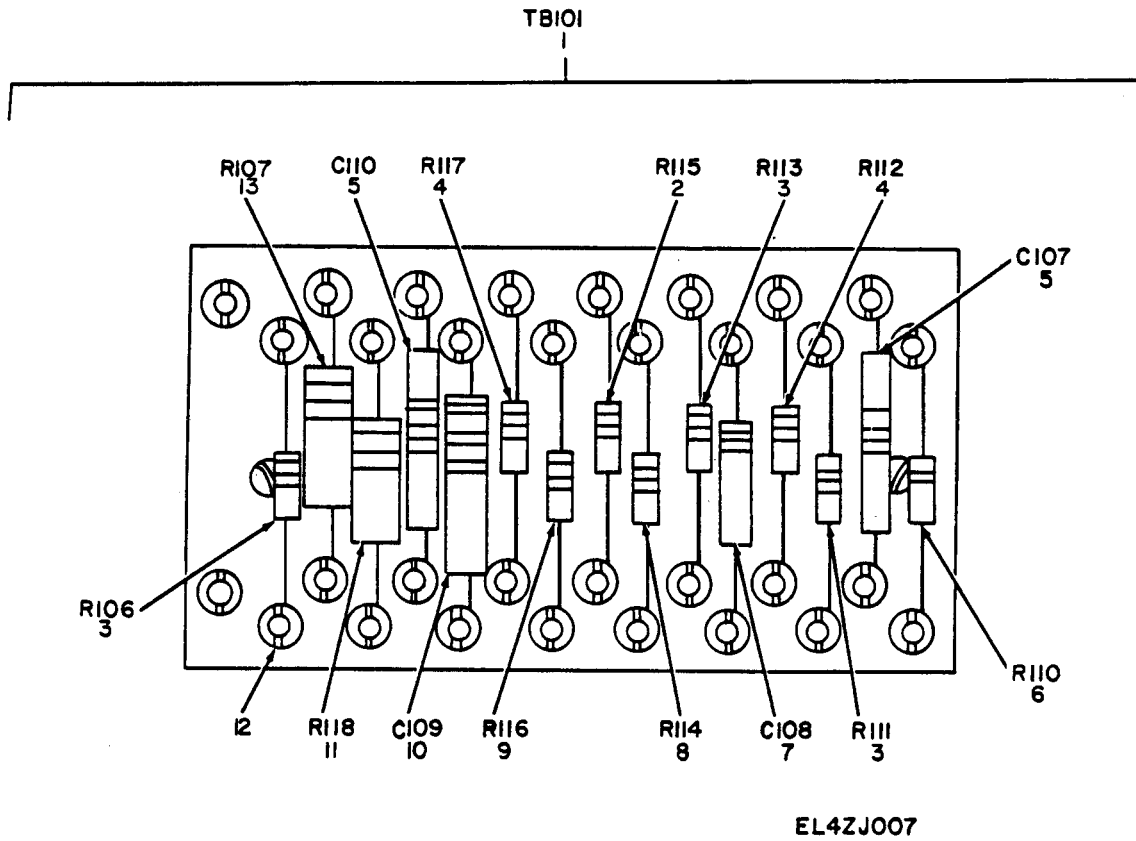


Figure 5. Frequency Standards TS-65C/FM0-1 and TS-65D/FM0-1, Terminal Board Assembly.

TM11-6625-407-SECTION II

(1) ILLUSTRATION (A) FIG NO.	(B) ITEM NO.	(2) SMR CODE	(3) NATIONAL STOCK NUMBER	(4) PART NUMBER	(5) FSCM	(6) DESCRIPTION	(7) USABLE ON CODE U/M	(8) QTY INC IN UNIT
5	1	PAHHH	5940-00-309-3686	SCB74840	80063	TERMINAL BOARD ASSY	EA	1
5	2	PAHZZ	5905-00-104-8350	RC20GF221J	81349	RESISTOR, FXDK, CMPSN	EA	1
5	3	PAHZZ	5905-00-279-2515	RC20GF474J	81349	RESISTOR, FXD, CMPSNB	EA	3
5	4	PAHZZ	5905-00-195-6761	RC20GF104J	81349	RESISTOR, FXD, CMPSN	EA	2
5	5	PAHZZ	5910-00-649-0455	65P10303	56289	CAPACITOR, FXD, PAPER	EA	2
5	6	PAHZZ	5905-00-192-0390	RC20GF105J	81349	RESISTOR, FXD, CMPSN	EA	1
5	7	PAHZZ	5910-00-717-0169	CM15FD101G03	81349	CAPACITOR, FXD, MICA	EA	1
5	8	PAHZZ	5905-00-185-8510	RC20GF103J	81349	RESISTOR, FXDK, CMPSN	EA	1
5	9	PAHZZ	5905-00-279-2519	RC20GF334J	81349	RESISTOR, FXD, CMPSN	EA	1
5	10	PAHZZ	5910-00-186-0113	65P22392	56289	CAPACITOR, FXD, PAPER	EA	1
5	11	PAHZZ	5905-00-185-8516	RC42GF103J	81349	RESISTOR, FXD, CMPSN	EA	1
5	12	PAHZZ	5940-00-159-0236	1969C	71279	LUG	EA	30
5	13	PAHZZ	5905-00-192-3973	RC20GF471J	81349	RESISTOR, FXD, CMPSN	EA	1

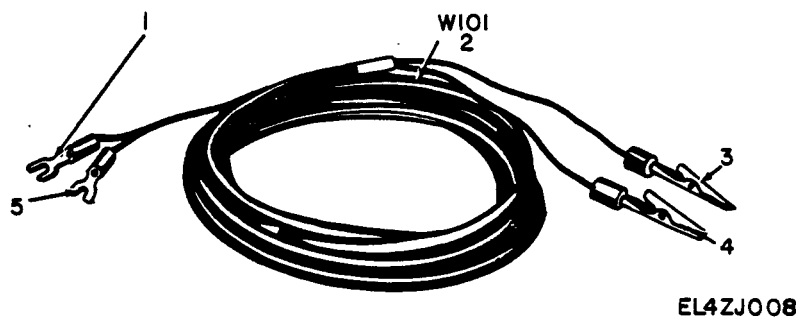


Figure 6. Cable Assembly CX-268/FMQ-1.

(1) ILLUSTRATION (A) FIG NO.	(B) ITEM NO.	(2) SMR CODE	(3) NATIONAL STOCK NUMBER	(4) PART NUMBER	(5) FSCM	(6) DESCRIPTION	(7) USABLE ON CODE U/M	(8) QTY INC IN UNIT
GROUP 01 CABLE ASSEMBLY CX-268/FMQ-1								
6	1	PAOZZ	5940-00-615-9217	332BLACK	71002	TERMNINAL, LUG	EA	1
6	2	PAOZZ	6145-00-660-9321	CO02MGF2-18SJ037 5	81349	CABLE, POWER, ELEC	FT	10
6	3	PAOZZ	5999-00-263-1051	60CHS-RED	76545	CLIP, ELECTRICAL	EA	1
6	4	PAOZZ	5999-00-501-8365	60CHSD	76545	CLIP, ELECTRICAL	EA	1
6	5	PAOZZ	5940-00-518-7200	332RED	71002	TERMINAL, LUG	EA	1

NATIONAL STOCK NUMBER AND PART NUMBER INDEX
NOTE: LATE INCLUSIVE AT END OF INDEX.

STOCK NUMBER	FIGURE NO.	ITEM NO.	STOCK NUMBER	FIGURE NO.	ITEM NO.
6240-00-057-2887	3	25	6210-00-299-3916	3	26
6240-00-057-2887	4	75	6625-00-309-3505	4	13
5310-00-058-2950	3	21	5940-00-309-3686	5	1
5305-00-059-8228	2	18	6625-00-338-4421	2	27
5905-00-104-8350	5	2	5999-00-351-3833	4	66
5905-00-106-9346	2	50	5360-00-351-6062	4	58
5910-00-112-8334	2	29	6145-00-500-1726	1	4
5320-00-117-6516	1	10	5940-00-513-3264	4	62
5320-00-117-6516	1	37	5940-00-518-7200	6	5
5905-00-141-0592	2	40	5930-00-539-7013	3	3
5940-00-143-5330	2	77	5910-00-543-9267	2	53
5940-00-155-7287	2	76	3010-00-548-2222	4	29
5940-00-156-7344	4	2	5310-00-559-0070	2	25
5940-00-159-0236	5	12	5310-00-559-0070	2	58
5355-00-160-5881	4	23	5310-00-559-0070	3	13
5910-00-161-6561	2	38	5340-00-571-2569	1	30
5910-00-161-6862	2	17	5310-00-576-5752	2	60
5910-00-161-6862	2	34	5310-00-579-0079	2	22
5325-00-185-0017	2	75	5310-00-579-0079	2	36
5905-00-185-8510	5	8	5310-00-579-0079	3	7
5905-00-185-8516	2	48	5310-00-579-0079	4	4
5905-00-185-8516	5	11	5310-00-579-5554	1	21
5910-00-186-0113	2	46	5310-00-579-5554	1	39
5910-00-186-0113	5	10	5310-00-579-5554	4	15
5905-00-192-0390	2	47	5310-00-579-5554	4	53
5905-00-192-0390	5	6	5961-00-608-7033	4	65
5905-00-192-3973	5	13	5940-00-615-9217	6	1
5310-00-193-7577	2	44	5305-00-616-3543	2	57
5310-00-193-7577	2	56	5960-00-624-4718	2	8
5310-00-193-7577	4	32	5935-00-636-7145	1	2
5940-00-194-7706	3	9	5905-00-643-6284	2	71
5905-00-195-6761	2	52	5910-00-649-0455	2	51
5905-00-195-6761	4	42	5910-00-649-0455	5	5
5905-00-195-6761	5	4	5930-00-655-1507	3	4
5935-00-201-4783	2	49	6145-00-660-9321	6	2
5340-00-205-5159	1	17	5960-00-669-6861	2	6
5940-00-221-0100	3	15	5960-00-686-8085	2	32
5935-00-222-9828	2	43	5960-00-686-8087	2	15
5935-00-222-9828	2	73	5960-00-686-8087	2	30
6240-00-223-9100	4	41	5910-00-725-7247	2	10
6250-00-227-0329	4	44	5310-00-809-8544	2	19
6625-00-234-0262	1	43	5960-00-827-8782	2	31
6250-00-242-8704	4	76	5960-00-866-2712	2	5
5920-00-248-8871	2	39	5305-00-889-3001	2	64
5935-00-260-0516	2	54	5305-00-889-3001	4	46
5960-00-262-0167	2	16	5920-00-892-9311	3	22
5999-99-263-1051	6	3	5310-00-913-8881	4	45
5310-00-264-1337	4	21	5310-00-934-9738	1	22
6625-00-265-7862	4	47	5310-00-934-9738	4	52
5360-00-268-1980	4	11	5310-00-934-9739	2	12
5950-00-268-8700	2	3	5310-00-934-9739	4	33
5325-00-270-8870	2	67	5310-00-934-9747	2	23
5940-00-271-7258	3	11	5310-00-934-9747	2	37
5960-00-272-9182	2	7	5310-00-934-9747	3	8
5975-00-273-0788	3	5	5310-00-934-9757	2	26
5905-00-279-2519	5	3	5310-00-934-9757	3	12
5905-00-279-2519	5	9	5310-00-934-9758	2	61
5905-00-279-3504	2	42			
5920-00-280-8342	3	23	5310-00-983-8483	2	70
5920-00-280-8344	3	23	5310-00-983-8483	4	18
5961-00-284-4840	4	65	5305-00-984-4988	4	7
5355-00-284-5659	2	72	5305-00-984-4989	2	62
5960-00-284-9285	2	33	5305-00-984-4989	4	40
5340-00-290-0134	1	25	5305-00-984-6195	2	66
5325-00-290-3974	1	16	5305-00-993-0190	4	57
5905-00-299-2028	2	41			

PART NUMBER	FSCM	FIG NO	ITEM NO	PART NUMBER	FSCM	FIG NO	ITEM NO
AN931A3-5	88044	2	75	DS189	81044	1	25
A3	81348	4	65	F02GR500A	81349	3	23
CE53C350P	81349	2	10	F02G1R00A	81349	3	23
CE63C500G	81349	2	53	MILB-005423-TYPEA, STYLENO.-3	81349	3	3
CM15FD101G03	81349	5	7	MS20470AD4-3	96906	1	10
CO02MFG2-18SJ0375	81349	6	2	MS20470AD4-3	96906	1	37
CP69B1EF104V	81349	2	29	MS24233-2	96906	2	32
CP69B1EF105V	81350	2	38	MS24233-5	96906	2	15
CP69B1EF504K1	81349	2	17	MS24233-5	96906	2	30
CP69B1EF504K1	81349	2	34	MS25100-22	96906	3	4
CX268FMQ1	80058	1	43				

NATIONAL STOCK NUMBER AND PART NUMBER INDEX

PART NUMBER	FSCM	FIG. NO.	ITEM NO.	PART NUMBER	FSCM	FIG. NO.	ITEM NO.
MS27183-5	96906	2	70	SCB74825	80063	1	13
MS27183-5	96906	4	18	SCB74828	80063	1	19
MS27183-7	96906	2	19	SCB748291	80063	1	33
MS35190-10	96906	1	20	SCB748292	80063	1	31
MS35190-33	96906	3	6	SCB748293	80063	1	26
MS35190-33	96906	4	71	SCB748294	80063	1	23
MS35206-1	96906	4	67	SCB74833	80063	1	29
				SCB74834	80063	3	19
				SCB74835	80063	1	1
MS35206-14	96906	4	28	SCB748352	80063	1	4
MS35206-2	96906	1	38	SCB74839	80063	2	9
MS35206-2	96906	4	14	SCB74840	80063	5	1
MS35206-25	96906	4	7	SCB74844	80063	3	9
MS35206-26	96906	2	62	SCB74845	80063	3	10
MS35206-26	96906	4	40	SCB74846	80063	4	25
MS35206-27	96906	2	21	SCB74847	80063	4	24
MS35206-27	96906	2	35	SCB74850	80063	4	27
MS35206-28	96906	2	64	SCB74851	80063	4	16
MS35206-28	96906	4	46	SCB74852	80063	4	10
MS35206-3	96906	3	20	SCB74853	80063	4	11
MS35206-3	96906	4	30	SCB74854	80063	4	12
MS35206-3	96906	4	56	SCB74855	80063	4	34
MS35206-32	96906	4	4	SCB74856	80063	4	37
MS35206-33	96906	4	19	SCB74857	80063	4	58
MS35206-44	96906	2	66	SCB74858	80063	4	20
				SCB74860	80063	4	29
				SCB74861	80063	4	13
MS35214-3	96906	2	18	SCB74864	80063	4	69
MS35265-3	96906	2	57	SCB74865	80063	4	74
MS35333-35	96906	1	21	SCB74866	80063	4	70
MS35333-35	96906	1	39	SCB74867	80063	4	68
MS35333-35	96906	4	15	SCB74868	80063	4	3
MS35333-35	96906	4	53	SCB74869	80063	4	64
MS35333-36	96906	2	44	SCB74870	80063	4	66
MS35333-36	96906	2	56	SCB74871	80063	4	6
MS35333-36	96906	4	32	SCB74872	80063	4	61
MS35333-37	96906	2	22	SCB74876	80063	4	49
MS35333-37	96906	2	36	SCB74877	80063	4	48
MS35333-37	96906	3	7	SCB74878	80063	4	50
MS35333-37	96906	4	39	SCB74880	80063	4	55
MS35333-38	96906	2	25	SCB74881	80063	4	54
MS35333-38	96906	2	58	SCB74882-4	80063	4	43
MS35333-38	96906	3	13	SCB748822	80063	2	69
MS35333-39	96906	2	60	SCB748823	80063	2	14
MS35337-77	96906	3	21	SCB748824	80063	4	5
MS35649-202	96906	2	61	SCB748831	80063	2	68
MS35649-222	96906	1	22	SCB748832	80063	2	65
MS35649-222	96906	4	52	SCB74884	80063	4	31
MS35649-242	96906	2	12	SCB74888	80063	4	35
MS35649-262	96906	2	23	SCB74891	80063	1	32
MS35649-262	96906	2	37	SCB78092	80063	4	59
MS35649-262	96906	3	8	SCB78092-2	80063	4	60
MS35649-282	96906	2	26	SCC69098	80063	4	36
MS35649-282	96906	3	12	SCC69098-1	80063	4	38
MS3569-242	96906	4	33	SCC74823	80063	1	14
MS51971-3	96906	4	45	SCC74827	80063	1	15
NE-51	24455	4	41	SCC74827	80063	1	35
RC20GF103J	81349	5	8	SCC74832	80063	3	2
RC20GF104J	81349	2	52	SCC74838	80063	2	13
RC20GF104J	81349	4	42	SCC748383	80063	2	74
RC20GF104J	81349	5	4	SCC74842	80063	2	3
RC20GF105J	81349	2	47	SCC74843	80063	2	4
RC20GF105J	81349	5	6	SCC74849	80063	4	17
RC20GF122J	81349	2	40	SCC74863	80063	4	63
RC20GF221J	81349	5	2	SCC748633	80063	4	72
RC20GF334J	81349	5	9	SCC74874	80063	4	47
RC20GF471J	81349	5	13	SCC74879	80063	4	51
RC20GF472J	81349	2	42	SCD20648	80063	1	17
RC20GF474J	81349	5	3	SCD2065027	80063	1	30
RC32GF103K	81349	2	50	SCD748141	80063	1	40
RC32GF153J	81349	2	41	SCD74815	80063	1	24
RC42GF103J	81349	2	48				
RC42GF103J	81349	5	11	SCD748152	80063	1	28
RV4NAYS503A	81349	2	71	SCD748153	80063	1	36
SCB34065	80063	1	3	SCD74816	80063	1	34
SCB74817	80063	1	42	SCD74822	80063	1	5
SCB74818	80063	1	27				
SCB74819	80063	1	41	SCD748223	80063	1	6
SCB748221	80063	4	26	SCD748224	80063	1	9
SCB74824	80063	1	11	SCD74826	80063	1	8

NATIONAL STOCK NUMBER AND PART NUMBER INDEX

PART NUMBER	FSCM	FIG. NO.	ITEM NO.	PART NUMBER	FSCM	FIG. NO.	ITEM NO.
SCD74830	80063	2	1	12AX7WA	81349	2	31
SCD74831	80063	3	1	1205-00	78189	4	21
SCD748312	80063	3	14	12125	14655	2	11
SCD748313	80063	3	17	1969C	71279	5	12
SCD74836	80063	2	2	200	82851	3	18
SCD748364	80063	2	24	2005	71785	2	76
SCD748365	80063	2	59	2101-06-00	78189	4	62
SCD74848	80063	4	1	2104-06-00	78189	4	2
SCD748488	80063	4	9	217H	72765	4	76
SMB170320	80063	2	20	332BLACK	71002	6	1
SMB170321	80063	4	73	332RED	71002	6	5
SMB170322	80063	2	45	342001	75195	3	22
SMB170326	80063	2	28	432BNR1	10646	2	39
SMB353970	80063	3	17	44	8806	3	25
SMC353967	80063	3	2	44	8806	4	75
SMC353969	80063	2	13	54360	3040	2	27
SMD353963	80063	1	5	5727-2D21W	81349	2	33
SMD353965	80063	2	1	6	77969	2	67
SMD353966	80063	3	1	6A	73506	4	65
SMD353971	80063	2	2	6X4WA	81349	2	7
SR6P	28520	3	5	60CHS-RED	76545	6	3
S3096440269	75376	4	23				
TS101P01	81350	2	49	6005-6AQ5W	81349	2	6
TS102P01	81349	2	54	65P10303	56289	2	51
TS103P01	81349	2	43	65P10303	56289	5	5
TS103P01	81349	2	73	65P22392	56289	2	46
TS103U01	81349	2	5	65P22392	56289	5	10
TYPEU	45722	3	16	7	79963	3	11
UP121M	81349	1	2	712	13812	4	44
W72879	77748	4	8	756	81312	2	77
0B2WA	81349	2	8	7775	72825	3	15
1032A34	88044	1	18	81-431	72619	3	26
1166	11242	2	72	810B431	72619	3	24
12AT7WA	81349	2	16	99967C098	76530	1	16

LATEST NATIONAL STOCK NUMBER ASSIGNMENTS

STOCK NUMBER	FIG. NO.	ITEM NO.
6210-00-186-7923	3	24
5999-00-501-8365	6	4
5910-00-717-0169	5	7
5305-00-889-2997	2	55
5305-00-889-3116	2	63
5305-00-989-0682	4	22

LATEST PART NUMBER ASSIGNMENTS

PART NUMBER	FSCM	FIG. NO.	ITEM NO.
MS35206-205	96906	4	22
MS35206-213	96906	2	63
MS35206-214	96906	4	57
MS35206-215	96906	2	55
SCD74815-1	80063	1	12
SCD74822-2	80063	1	7
60CHSD	76545	6	4

RECOMMENDED CHANGES TO EQUIPMENT TECHNICAL MANUALS



SOMETHING WRONG WITH THIS MANUAL?

THEN...JOT DOWN THE DOPE ABOUT IT ON THIS FORM, TEAR IT OUT, FOLD IT AND DROP IT IN THE MAIL!

FROM: (YOUR UNIT'S COMPLETE ADDRESS)

Commander
Stateside Army Depot
ATTN: AMSTA-US
Stateside, N.J. 07703

DATE 10 July 1975

PUBLICATION NUMBER

TM 11-5840-340-12

DATE

23 Jan 74

TITLE

Radar Set AN/PSC-76

BE EXACT...PIN-POINT WHERE IT IS

IN THIS SPACE TELL WHAT IS WRONG AND WHAT SHOULD BE DONE ABOUT IT:

PAGE NO.	PARA-GRAPH	FIGURE NO.	TABLE NO.
2-25	2-28		
3-10	3-3		3-1
5-6	5-8		
		FO3	

Recommend that the installation antenna alignment procedure be changed throughout to specify a 2° IFF antenna lag rather than 1°.

REASON: Experience has shown that with only a 1° lag, the antenna servo system is too sensitive to wind gusting in excess of 27 knots, and has a tendency to rapidly accelerate and decelerate as it hunts, causing strain to the drive train. Hunting is minimized by adjusting the lag to 2° without degradation of operation.

Item 5, Function column. Change "2 db" to "3db."

REASON: The adjustment procedure for the TRANS POWER FAULT indicator calls for a 3 db (500 watts) adjustment to light the TRANS POWER FAULT indicator.

Add new step f.1 to read, "Replace cover plate removed in step e.1, above."

REASON: To replace the cover plate.

Zone C 3. On J1-2, change "+24 VDC to "+5 VDC."

REASON: This is the output line of the 5 VDC power supply. + 24 VDC is the input voltage.

TEAR ALONG DOTTED LINE

TYPED NAME, GRADE OR TITLE, AND TELEPHONE NUMBER

SSG I. M. DeSpirito 999-1776

SIGN HERE:

SSG I. M. DeSpirito

DA FORM 2028-2
1 AUG 74

P.S.--IF YOUR OUTFIT WANTS TO KNOW ABOUT YOUR MANUAL "FIND" MAKE A CARBON COPY OF THIS AND GIVE IT TO YOUR HEADQUARTERS.

HISA 1686-75

RECOMMENDED CHANGES TO EQUIPMENT TECHNICAL MANUALS



SOMETHING WRONG WITH THIS MANUAL?

THEN...JOT DOWN THE DOPE ABOUT IT ON THIS FORM, TEAR IT OUT, FOLD IT AND DROP IT IN THE MAIL!

FROM: (YOUR UNIT'S COMPLETE ADDRESS)

DATE

PUBLICATION NUMBER

TML-6625-407-24P

DATE

14 Sep 78

TITLE

FREQUENCY STANDARDS
TS-65C/FMQ-1 AND TS-65D/FMQ-1

BE EXACT...PIN-POINT WHERE IT IS

IN THIS SPACE TELL WHAT IS WRONG
AND WHAT SHOULD BE DONE ABOUT IT:

PAGE NO.	PARA-GRAPH	FIGURE NO.	TABLE NO.

TEAR ALONG DOTTED LINE

TYPED NAME, GRADE OR TITLE, AND TELEPHONE NUMBER

SIGN HERE:

FILL IN YOUR
UNIT'S ADDRESS

FOLD BACK

DEPARTMENT OF THE ARMY

OFFICIAL BUSINESS
PENALTY FOR PRIVATE USE, \$300

POSTAGE AND FEES PAID
DEPARTMENT OF THE ARMY
DOD-314



Commander
US Army Communications and
Electronics Materiel Readiness Command
ATTN: DRSEL-MA-Q
Fort Monmouth, New Jersey 07703

TEAR ALONG DOTTED LINE

FOLD BACK

RECOMMENDED CHANGES TO EQUIPMENT TECHNICAL MANUALS



SOMETHING WRONG WITH THIS MANUAL?

THEN... JOT DOWN THE DOPE ABOUT IT ON THIS FORM, TEAR IT OUT, FOLD IT AND DROP IT IN THE MAIL!

FROM: (YOUR UNIT'S COMPLETE ADDRESS)

DATE

PUBLICATION NUMBER

TM11-6625-407-24P

DATE

14 Sep 78

TITLE FREQUENCY STANDARDS

TS-65C/FMQ-1 & TS-65D/FMQ-1

BE EXACT... PIN-POINT WHERE IT IS

IN THIS SPACE TELL WHAT IS WRONG AND WHAT SHOULD BE DONE ABOUT IT:

PAGE NO.

PARA-GRAPH

FIGURE NO.

TABLE NO.

TEAR ALONG DOTTED LINE

TYPED NAME, GRADE OR TITLE, AND TELEPHONE NUMBER

SIGN HERE:

DA FORM 2028-2
1 AUG 74

P.S.--IF YOUR OUTFIT WANTS TO KNOW ABOUT YOUR MANUAL "FIND," MAKE A CARBON COPY OF THIS AND GIVE IT TO YOUR HEADQUARTERS.

FILL IN YOUR
UNIT'S ADDRESS

FOLD BACK

DEPARTMENT OF THE ARMY

OFFICIAL BUSINESS

PENALTY FOR PRIVATE USE, \$300

POSTAGE AND FEES PAID
DEPARTMENT OF THE ARMY
DOD-314



Commander
US Army Communications and
Electronics Materiel Readiness Command
ATTN: DRSEL-MA-Q
Fort Monmouth, New Jersey 07703

TEAR ALONG DOTTED LINE

FOLD BACK

RECOMMENDED CHANGES TO EQUIPMENT TECHNICAL MANUALS



SOMETHING WRONG WITH THIS MANUAL?

THEN... JOT DOWN THE DOPE ABOUT IT ON THIS FORM, TEAR IT OUT, FOLD IT AND DROP IT IN THE MAIL!

FROM: (YOUR UNIT'S COMPLETE ADDRESS)

DATE

PUBLICATION NUMBER

TM11-6625-407-24P

DATE

14 Sep 78

TITLE

FREQUENCY STANDARDS
TS-65C/FMQ-1 & TS-65D/FMQ-1

BE EXACT... PIN-POINT WHERE IT IS

PAGE NO.

PARA-GRAPH

FIGURE NO.

TABLE NO.

IN THIS SPACE TELL WHAT IS WRONG AND WHAT SHOULD BE DONE ABOUT IT:

TEAR ALONG DOTTED LINE

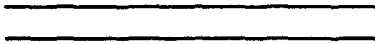
TYPED NAME, GRADE OR TITLE, AND TELEPHONE NUMBER

SIGN HERE:

FILL IN YOUR
UNIT'S ADDRESS

FOLD BACK

DEPARTMENT OF THE ARMY



OFFICIAL BUSINESS

PENALTY FOR PRIVATE USE, \$300

POSTAGE AND FEES PAID
DEPARTMENT OF THE ARMY
DOD-314



Commander
US Army Communications and
Electronics Materiel Readiness Command
ATTN: DRSEL-MA-Q
Fort Monmouth, New Jersey 07703

FOLD BACK

TEAR ALONG DOTTED LINE

By Order of the Secretary of the Army:

BERNARD W. ROGERS
General, United States Army
Chief of Staff

Official:

J. C. PENNINGTON
Brigadier General, United States Army
The Adjutant General

DISTRIBUTION:

Active Army

USAINSCOM (2)	USA Dep (1)
COE (1)	Sig Sec USA Dep (1)
TSG (1)	Units org under fol TOE:
USAARENBD (1)	(1 cy each, unit, UNIONDC)
DARCOM (1)	29-207 (2)
TRADOC (2)	29-610 (2)
OS Maj Comd (4)	6-100
TECOM (2)	6-185
USACC (4)	6-186
MDW (1)	6-200
Armies (2)	6-201
Corps (2)	6-300
USAFABD (2)	6-302
Svc Colleges (1)	6-525
USASIGS (5)	6-526
USAADS (2)	6-575
USAFAS (2)	6-576
USAARMS (2)	6-700
USAJS (2)	6-701
USAES (2)	7
USAICS (3)	7-100
MAAG (1)	11-95
USARMIS (1)	11-500 (AA-AC)
USAERDAA (1)	17
USAERDAW (1)	17-100
USMA (2)	29-1
USAREUR (5)	29-11
Ft Monmouth (HISA) (26)	29-15
Ft Richardson (CERCOM) (2)	29-16
Fort Gillem (10)	29-25
Fort Gordon (10)	29-26
Fort Huachuca (10)	29-134
Fort Carson (5)	29-136
Army Dep (1) except	37
LBAD (14)	37-100
SAAD (30)	39-51
TOAD (14)	57
SHAD (3)	67

NG: State AG (3)

USAR: None

For explanation of abbreviations used see AR 310-50.

DEPARTMENT OF THE ARMY
US ARMY AG PUBLICATIONS CENTER
1655 WOODSON ROAD
ST. LOUIS, MISSOURI 63114

OFFICIAL BUSINESS
PENALTY FOR PRIVATE USE \$300

POSTAGE AND FEES PAID
DEPARTMENT OF THE ARMY
DOD 314



PIN: 023243-000